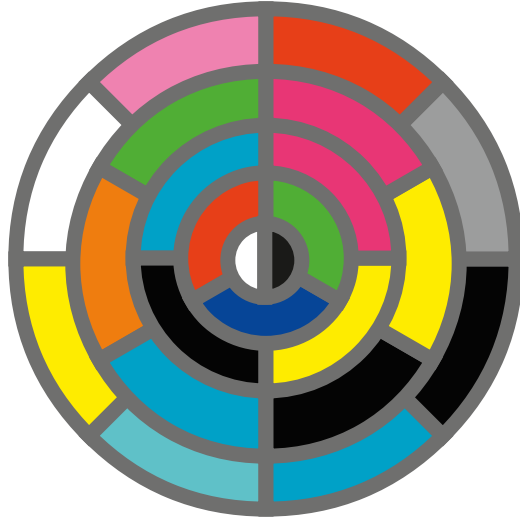
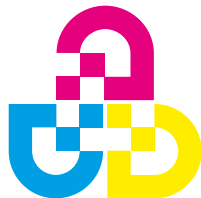


PROOF2GO



■ ■ ■ THE ONLY EASY WAY TO CREATE A PROOF ■ ■ ■



3DAP

Digital Control Strip
v3 6001 (PT1)
Approved 30/01/09

POWERFUL RIP SOFTWARE PRODUCE CERTIFIED PROOFS



ColourProcess

Driven by Innovation

PROOF2GO Creative

The Creative version of Proof2Go is a standalone version that comes with a predefined paper stock "CP-260 Satin" which is fogra certified.

The quality of the prints and the flexibility of the software make this product essential for every professional graphic artist, designer and photographer.

Whether your files are TIFF, PDF, EPS or JPEG format, simply Drag & Drop your files to your predefined printing queue on the RIP or print queue hot folder.

Predefined printing queues:

- ISOcoated-v2
- 3DAPv3 Paper Type 1
- 3DAPv3 Paper Type 3

Available option:

Uncoated paper stock "CP-170 Matt"

Predefined printing queues:

- PSUncoated
- Good Weekend Magazine

PROOF2GO Pro

The Pro version of Proof2Go allows the user to generate completely new linearizations and custom paper profiles with the Colour Control tool.

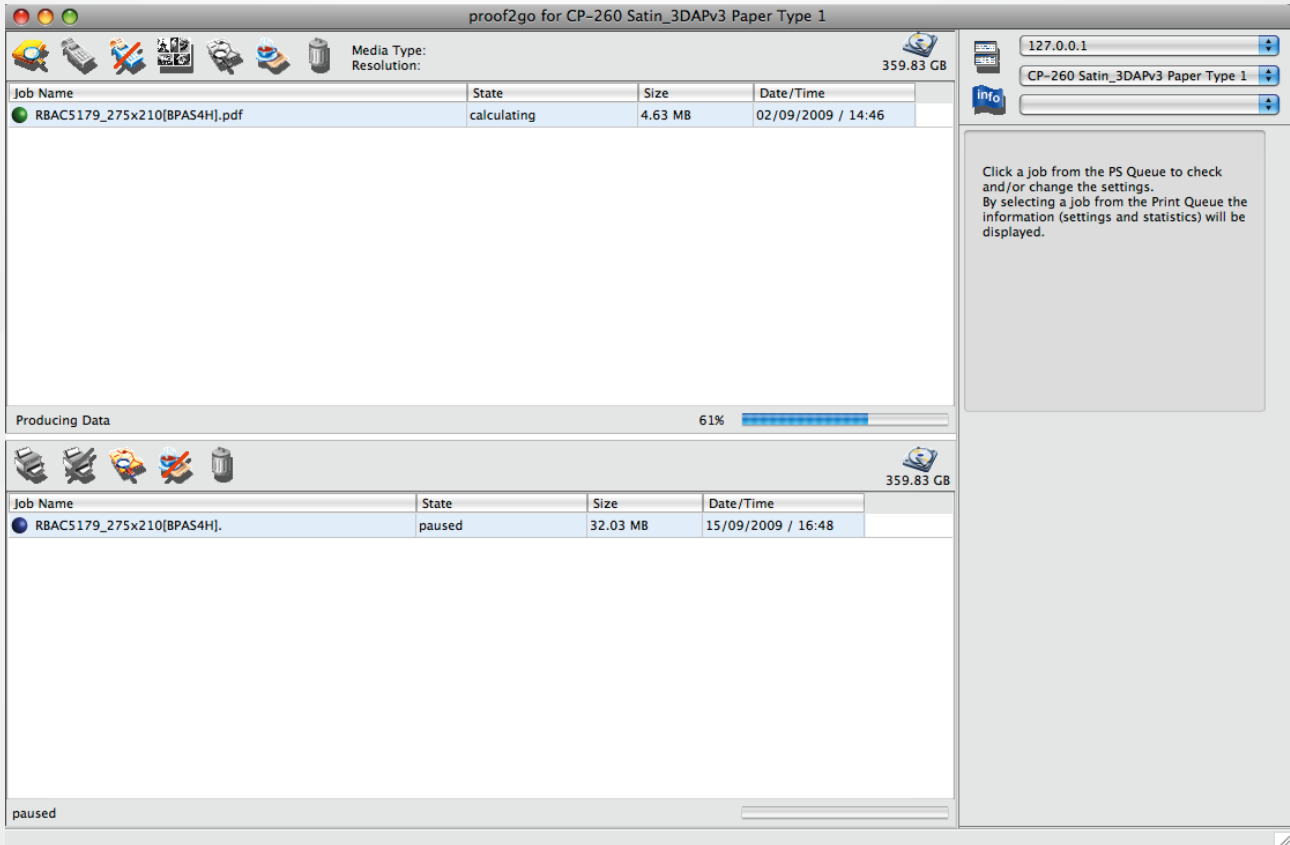
Using its client/server structure, simply install the software as a server on one of your Macs or Windows PCs and avoid the need to move from workstation to proofing system to manage workflow.

- Create up to 15 queues
- Client/Server concept
- Spot colour editor
- Nesting function



Powerful RIP software

Simply drag-and-drop your pdf, tiff, jpeg, eps or postscript files into the jobs queue in the Proof2Go RIP application or drop your files directly into the Proof2Go hot folders to print.



Proof2Go - Colour Control Tool Easy 5 step linearization and profiling

Ink Limit



Channel Gradation



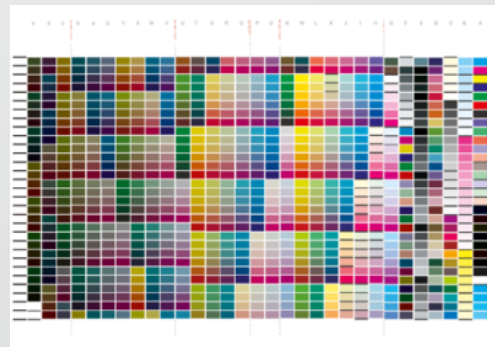
CMYK Gradation



Ink Density



IT873-Strip-A3
profile target





Proof2Go - Features & Benefits

- Easy to use
- Create up to 15 queues (Pro version)
- Mac OS X
- Windows 2000/XP
- Hotfolder based
- RIP while printing
- Print preview
- Data formats PS, PDF, EPS, TIFF, JPEG (RGB + CMYK)
- Drag and drop
- Reproduce any colour reference (i.e ISOcoated-v2)
- Generate new linearizations and custom paper profiles (Pro version)
- Client/Server concept (Pro version)
- Spot colour editor (Pro version)
- Nesting function (Pro version)

Compatible with the following printers:

Canon iPF Series: iPF500 (LP17), iPF510, iPF600 (LP24), iPF610, iPF700, iPF710, iPF5000, iPF5100, iPF6100, iPF8000, iPF8000S, iPF8100, iPF9000, iPF9000S, iPF9100.

Canon W-Series: W2200, W6200, W6400, W6400PG, W7200, W8200, W8400, W8400PG.

Epson Stylus Photo: 2100, R2400, R2880.

Epson Stylus Pro: 3000, 3800, 4000, 4450, 4800, 4880, 5000, 7000, 7450, 7500, 7600, 7800, 7880, 7900, 9000, 9450, 9500, 9600, 9800, 9880, 9900, 10600, 11880.

HP DesignJet: 10, 20, 30, 50, 90r, 120, 130, 1050, 5000-42, 5000-60, 5500-42, 5500-60, Z2100-24, Z2100-44, Z3100-24, Z3100-44, Z3200-24, Z3200-44, Z6100-42, Z6100-60.

System requirements:

- Intel Mac, Mac OS X 10.5
- Intel PC (or compatible) with Windows XP Professional
- 2 GB main memory, minimum 10 GB fixed disk space
- Network connection and Internet access
- Control of printer via USB, AppleTalk or TCP/IP



ColourProcess
Driven by Innovation

Level 3, Suite 10, Buckingham St, Surry Hills NSW 2010
PH +61 2 9698 0043 Fax +61 2 9690 1426
Email: info@colourprocess.com.au
www.colourprocess.com.au