

the basicCs of color

basI**C**Color[®]

A PIECE OF ART ...

...BELONGS IN A MUSEUM!

data sheet - basI**C**Color control

basI**C**Color GmbH
Maistraße 18
D-82377 Penzberg
Tel.: +49-(0) 88 56/93 25 05
info@basI**C**Color.de

basI**C**Color
... because it simply works!
[www.basI**C**Color.de](http://www.basICColor.de)

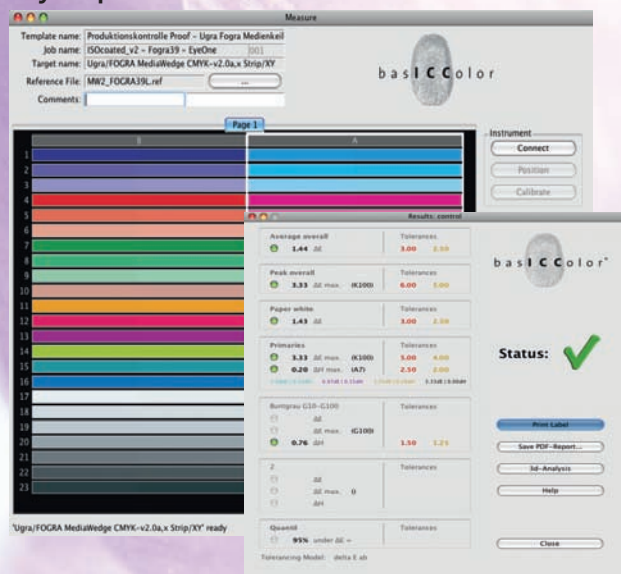


basIcColor®

... because it simply works!

control

A proof print should be a carbon copy of your press sheet!



Are you familiar with that problem: You have a proof print in your hands and you do not know how accurate it is? Does the proof match the offset standard or it is just a "colorful" inkjet print? With basIcColor *control* the uncertainty is history. basIcColor *control* comes with a complete set of reference values for all printing conditions standardized in ISO 12647-2. You just measure an Ugra/FOGRA media wedge that has been included in the proof print and you get an unbiased evaluation based on six criteria defined by FOGRA: paper simulation, average and maximum deviation of all color patches, maximum deviation of the primaries and hue difference of the primary colors and composed grey. The results are visible at one glance – with a simple red/green „traffic light“ system. If your customer is more demanding than the standard, you can add the customer's criteria, which show a yellow traffic light, if exceeded. In order to proof to your printer's that the proof print is OK, you can print a report on a label that you stick on the proof. No open questions and no more misunderstanding! Of course basIcColor *control* can be used with other targets as well, e.g. basIcColor RGB control wedge for QC of film recorders and minilabs. basIcColor *control* – and you are in control.

Features:

- ▶ Quality control module for basIcColor catch
- ▶ Supports all common printing targets and control wedges
- ▶ Supports all common measurement instruments
- ▶ FOGRA Reference data for CMYK Media Wedge 1.x, 2.x and 3.x included
- ▶ Creates Individual reference files from ICC profiles
- ▶ Detailed QC report
- ▶ Prints a certificate on adhesive label
- ▶ Pass/Fail information with simple traffic light system
- ▶ 3D visualization of gamut and measured color values
- ▶ Easy handling with predefined templates and jobs (XML)

System Requirements (Minimum):

- M** Macintosh
 - ▶ Mac OS X 10.3.9
 - ▶ 64 MB available RAM
 - ▶ Supported measurement instrument not included
 - ▶ Appropriate target not included
- W** Windows
 - ▶ Windows® 2000 with SP3 or Windows® XP, Windows® Vista

Supported Targets:

- ▶ Ugra/FOGRA CMYK Media Wedge 1.x, 2.x, 3.x (not included)
- ▶ basIcColor RGB process control bar (included as TIFF file)
- ▶ basIcColor print3c and print4c targets (included as TIFF files)
- ▶ IT8.7/3, ECI 2002, GMG etc.

Other Products, Bundles and Options:

- ▶ basIcColor *catch pro*
- ▶ basIcColor *certify*
- ▶ Ugra/FOGRA Media Wedge CMYK 2.x or 3.x
- ▶ *i catch pro*
- ▶ *i UV catch pro*
- ▶ Spectrophotometer *eye-one pro (UV-cut)* and 1 seat *basIcColor catch pro*
- ▶ **DYMO Label Printer** w/ 6 rolls self-adhesive labels
- ▶ Technical Support Agreement (TSA)
 - provides 12 months of e-mail and telephone support from our **basIcCare Center**, and free product updates (for any number of seats).

Please refer to the price list on www.basIcColor.de

All published specifications and services are provided "As Is" without warranty of any kind and subject to change without notice. Please ask for volume and educational discounts!

basIcColor GmbH
Maistraße 18
D-82377 Penzberg
Tel.: +49-(0) 88 56/93 25 05
info@basIcColor.de
www.basIcColor.de