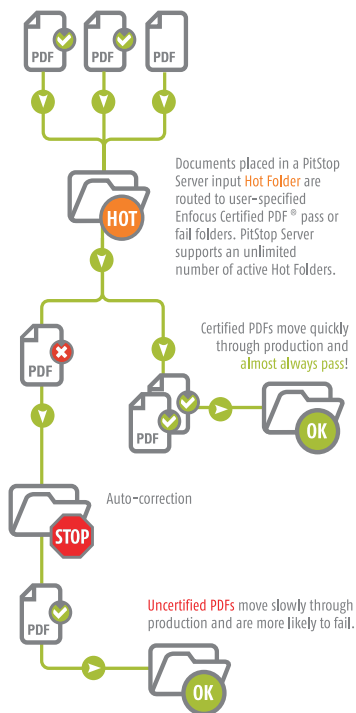


# Enfocus PitStop 10 Server

Manual editing tools such as PitStop Pro or PitStop Extreme are amazingly powerful in correcting last-minute problems in PDF files and making them suitable for production. PitStop Server 10 takes that same power to an automated level; using convenient watched folder architecture it allows you to automate inspection and correction of PDF files.



## Automated preflight & correction

The opportunities with PitStop Server are much larger. It brings editing and correction to the next level as it doesn't need user interaction. Correct text errors, convert colors, renumber pages, set correct page boxes, apply stamps, insert cover pages, move, rotate, and scale objects; are just a few of the possibilities. Transparency flattening allows you to ensure consistent results also when outputting to different devices.

An extensive preflight engine enables you to check for potential problems e.g. font problems, low image resolution, color issues,... Ink coverage problems are detected while handling transparency, overprint settings, overlapping items and layers correctly.

Of course PitStop Server is built on the industry-standard Enfocus preflight engine to check all aspects of your PDF files and supports standards such as PDF/X and the Ghent PDF Workgroup specifications but also allows you to use the profiles created by your publisher or printer.

You can generate a full preflight report that lists all problems found in your files. Next to the same user-friendly preflight reports as PitStop Pro, it enables you to create XML or annotated PDF reports. Embedded Certified PDF technology digitally signs your PDF files to ensure their quality and include the preflight results.

## Integrate PitStop Server in your workflow

PitStop Server 10 fits seamlessly into Enfocus Switch to provide preflighting and auto-correction of PDF files in a bigger automated workflow. Automatically download PDF files from FTP servers or receive them through email, preflight them and notify your customers automatically of problem files, are a few of the possible extensions to PitStop Server.

When more integration is in order, the CLI (command-line interface) included with PitStop Server 10 makes it a breeze. An easy mode allows instant integration of the preflight and auto-correction capabilities with standard settings, while the advanced mode allows full customization using an XML-driven integration.

## Highlights

### Transparency flattening at preflighting stage

The new ability to flatten transparencies within PDF files aids the consistency of output. Although the latest print engines can flatten transparency well, earlier generations that are still widely spread cannot always handle transparency reliably. When outputting on different devices the result may differ. PitStop Server 10 now enables transparency flattening to ensure a predictable output.

### Optimize PDF files

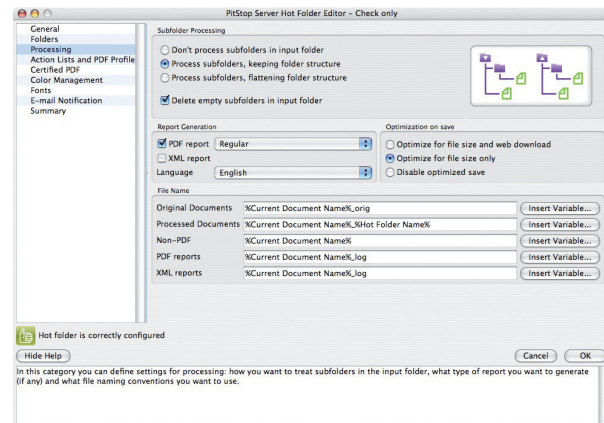
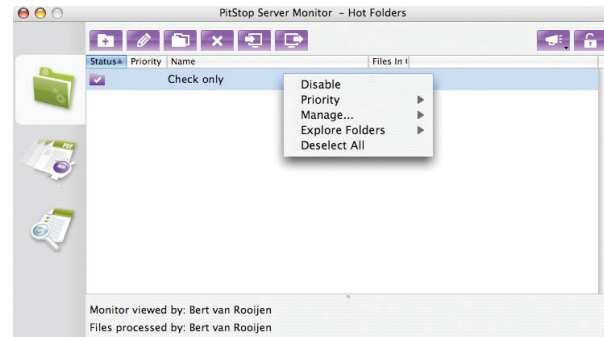
Do you need optimized PDFs for the web or for archiving? The optimization functionality in PitStop Server 10 analyses and removes unnecessary items within the PDF, such as invisible image data outside trim or crop boxes. This results in a smaller file size for storage and also for other purposes such as faster downloads from websites.

### Bringing color to the next level

Color management is also brought to a new level in PitStop Server 10, similar to the enhancements applied to the new PitStop Pro 10. It can now automatically check the total ink coverage while including transparency, overprint settings, overlapping items and layers. Black point compensation is also supported when using either Adobe® CMM or Little CMS.

### Key Benefits

- A hot folder based stand-alone application to automate inspection and correction of PDF files.
- Correct most common prepress errors during preflight without user interaction.
- Integrate PitStop Server in a larger environment using:
  - Enfocus Switch
  - The command-line interface
  - SDK for third-party developers is available



### System Requirements PitStop Server

#### Windows®

Microsoft® Windows® XP SP2 Professional or Home Edition  
Microsoft® Windows® Vista SP1 Home Premium, Business or Ultimate (32-bit and 64-bit)  
Microsoft® Windows® 2003 or 2008 Server Standard, Enterprise Edition or R2, Microsoft® Windows® 7 Home Premium, Professional or Ultimate

#### Macintosh®

Mac OS® X v.10.4.11 through 10.6  
Minimum 1 GB of RAM (2 GB recommended)  
1.024 x 768 screen resolution (1280 x 1024 or higher recommended), DVD drive (for installation from the product DVD)

#### Color Management

ICC profiles used must be compatible with the selected color management system.